

Sight glass level gauge PN40 / CL300 to PN100 - CL600

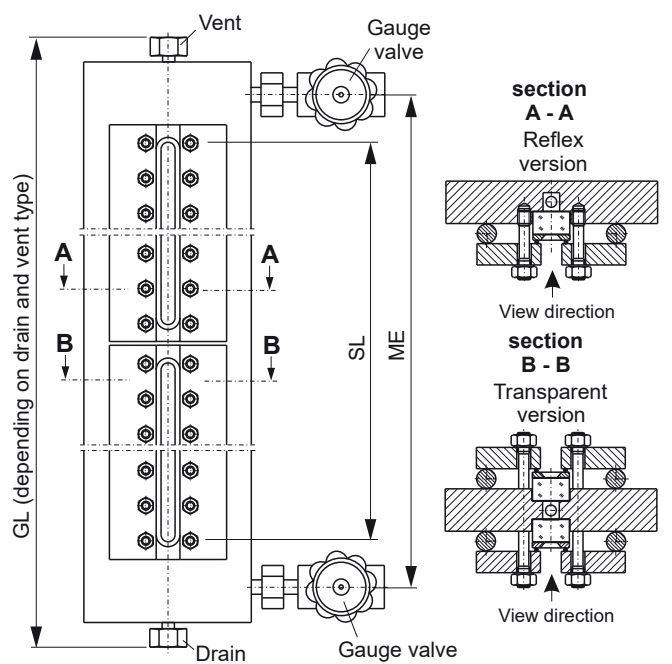
"Cold" High pressure, Reflex, Transparent, Connection side-side fixed
 Connection gauge valve to gauge chamber: union
 Handwheel

Product group **700**

Type **26**

Sheet: 1 Revision: 4

Date: 04/22



Field of Application

Direct reading liquid level indicator for general applications up to PN 100 / CL 600 (depends on glass type). Increased safety with ball check valves.

General Data

Visible length SL: ≤ME
 Body: 140x40 (Reflex), 200x40 (Transparent)
 Connection gauge valve - body: union
 Gauge valve types: see data sheet 760.50/51/52
 Actuation: hand wheel
 Material glass plates acc. to DIN 7081: Borosilicate
 Material media wetted parts: CS, SS
 Depending on delivery situation material can vary.
 Types with special materials e. g. Hastelloy, Monel etc. are available.
 Weight
 - basic weight (glass type 4-11)
 reflex / transparent: 21,0-27,0/24,0-32 kg
 - per segment (glass type 4-11)
 reflex / transparent: 7,9-15,6/10,4-19,8 kg
 Depending on execution weight can vary.

Design Data

Design pressure/-temperature see derating
 140x40: see data sheet BG00RE
 200x40: see data sheet BG00RF

Further Data

Connection gauge valve - body: see 700.VAR
 Process connection: see 700.VAR
 Vent: see 700.VAR
 Drain: see 700.VAR

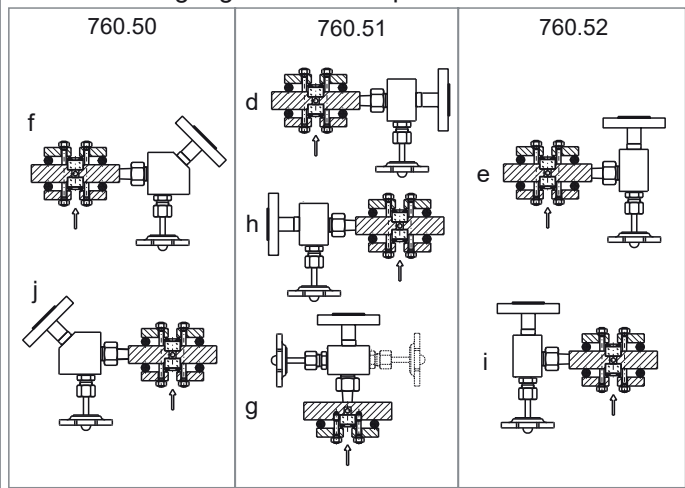
Accessories

Glass protection etc.: see accessories
 Frosts protection: see accessories
 Illumination: see accessories
 Scale: see accessories
 Heating: see accessories

CS (= carbon steel) and SS (= stainless steel type 316SS) are materials suitable for Pressure Vessels according to EN or ASME.

Subject to alterations

Orientation of gauge valve and operation



Ordering no.

7 0 0 2 6 X X X X X X X - X X - X X X X X X X X - X X X X		see 700.VAR	ME [mm]
bridging	without	0	
	with	1	
glass window	Reflex (DIN 7081)	1	
	Transparent (DIN 7081)	2	
gauge valve	760.50	5 0	
	760.51	5 1	X
	760.52	5 2	
		X X	nos of segments
			results from ME
		X	spec. glass types
			glass type
			DIN-bolts, -nuts
		A	ANSI-bolts, -nuts
		E	140x40 (Reflex)
		F	200x40 (Transparent)
			gauge body
			orientation
			gauge valve

Phönix Control Kft.

Bolyki Tamás street 44.

Ozd, 3600, Hungary

Tel.: +36-48-572-310

+36-48-572-567

Fax.: +36-48-471-642

E-mail: info@phoenix-brv.hu

web: www.phoenixcontrol.hu