

Sight Glass Level Gauge Glass tube PN16 / CL150

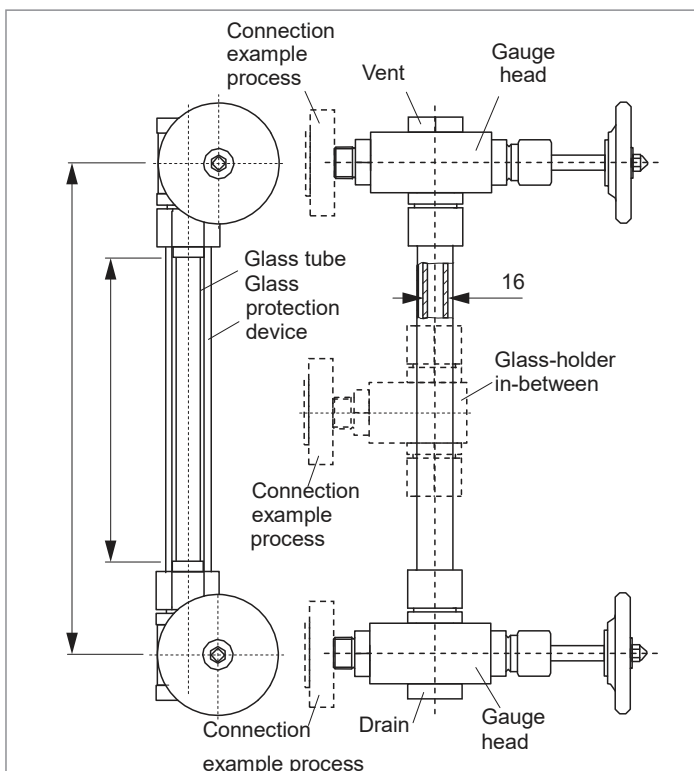
Connection top-bottom pivoted
Offset, handwheel
Glass protection

Product group **700**

Type **01**

Sheet: 19 Revision: 3

Date: 04/22



Field of Application

Direct reading liquid level indicator for general applications up to PN16 / CL150 Increased safety with ball check valves and glass protection.

General Data

Visible length SL: ME-140 mm
from 1500 mm and up every 1000 mm glass-holder in-between

Process connection: union, flange
Gauge valve types: s. datasheet 760.01
Actuation: hand wheel
Material glass tube: Borosilicate
Material media wetted parts: CS, SS
Material glass protection device: SS
Material sealing glass tube: Viton
Depending on delivery situation material can vary.
Types with special materials e. g. Hastelloy, Monel etc. are available.

Weight
- basic weight for ME ≤1500 mm: 3,6 kg
- basic weight for ME >1500 mm: 4,9 kg
- + weight/m: 0,2 kg
- weight glass protection device/m: 0,2 kg

Design Data

Design pressure/-temperature: -20...+200 °C/
0...1,6 MPa

Further Data

Process connection: see 703.VAR
Vent: see 703.VAR
Drain: see 703.VAR

Accessories

Scale: see accessories 700

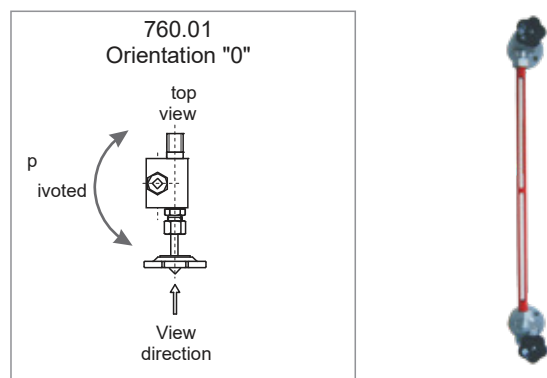
Spare parts

Glass tube: length = ME -40
Gasket: 0160022015VI

CS (= carbon steel) and SS (= stainless steel type 316SS) are materials suitable for Pressure Vessels according to EN or ASME.

Subject to alterations

Orientation of gauge valve and operation



Ordering no.

7000100010Q0 - 00 - XXXXX - XXX		see 703.VAR	ME [mm]
Glass-holder in-between	without (ME ≤ 1500)	0	
	with (ME > 1500 mm)	1	
Gauge valve	760.01	0 1 0	see Datasheet 760.01
			orientation gauge valve

Phönix Control Kft.

Bolyki Tamás street 44.

Ozd, 3600, Hungary

Tel.: +36-48-572-310

+36-48-572-567

Fax.: +36-48-471-642

E-mail: info@phoenix-brv.hu

web: www.phoenixcontrol.hu