

Sight glass level gauge PN40 / CL300 to PN100 / CL600

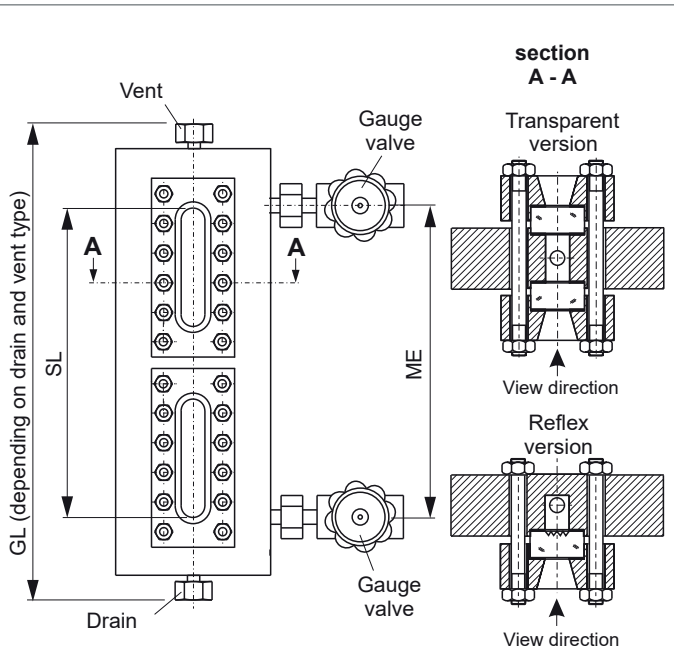
"Cold" High pressure, Reflex, Transparent, Connection top-bottom pivoted
Connection gauge valve to gauge chamber: union
Offset, handwheel

Product group **700**

Type **37**

Sheet: 1 Revision: 4

Date: 04/22



Field of Application

Direct reading liquid level indicator for general applications up to PN100/CL600 (depends on glass type). Increased safety with ball check valves.

General Data

Visible length SL: ≤ME
Body: 75x30, 80x40, 100x40, 120x40, 140x40
Connection gauge valve - body: union
Gauge valve types: see data sheet 760.50/51/52
Actuation: hand wheel
Material glass plates acc. to DIN 7081: Borosilicate
Material media wetted parts: CS, SS
Depending on delivery situation material can vary.
Types with special materials e. g. Hastelloy, Monel etc. are available.
Weight
- basic weight (glass type 4-11) reflex / transparent: 21.0-27.0/24.0-32.0 kg
- per segment (glass type 4-11) reflex / transparent: 7.9-15.6/10.4-19.8 kg
Depending on execution weight can vary.

Design Data

Design pressure/-temperature see derating
75x30, 80x40, 100x40, 120x40, 140x40: Datasheet BG00R2-00RD

Further Data

Connection gauge valve - body: see 700.VAR
Process connection: see 700.VAR
Vent: see 700.VAR
Drain: see 700.VAR

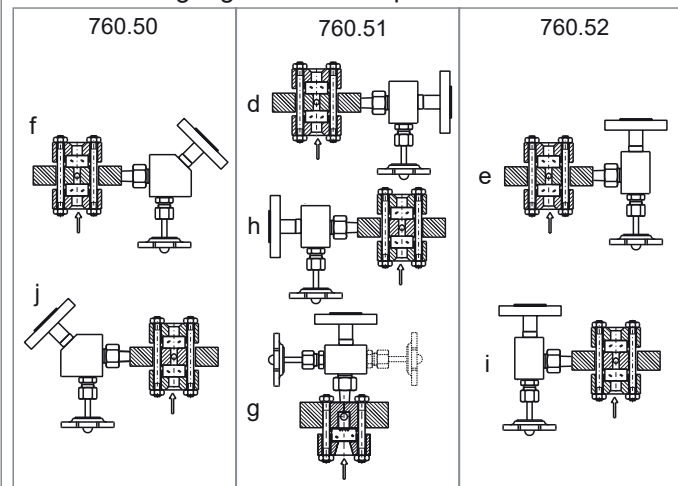
Accessories

Glass protection etc.: see accessories
Frosts protection: see accessories
Illumination: see accessories
Scale: see accessories
Heating: see accessories

CS (= carbon steel) and SS (= stainless steel type 316SS) are materials suitable for Pressure Vessels according to EN or ASME.

Subject to alterations

Orientation of gauge valve and operation



Ordering no.

7 0 0 3 7 X X X X X X X X - X X - X X X X X X X X X - X X X X			see 700.VAR	ME [mm]
bridging	without	0		
	with	1		
glass window	Reflex (DIN 7081)	1		
	Transparent (DIN 7081)	2		
gauge valve	760.50	5 0	X 7, A - D, depends on design pressure	gauge body
	760.51	5 1	X see data sheet 760.50/51/52	orientation gauge valve
	760.52	5 2		
			X X	nos of segments
				results from ME
			X	spec. glass types
				glass type
				DIN-bolts, -nuts
			A	ANSI-bolts, -nuts
				DIN/ASME

Phönix Control Kft.

Bolyki Tamás street 44.
Ozd, 3600, Hungary
Tel.: +36-48-572-310
+36-48-572-567
Fax.: +36-48-471-642
E-mail: info@phoenix-brv.hu
web: www.phoenixcontrol.hu